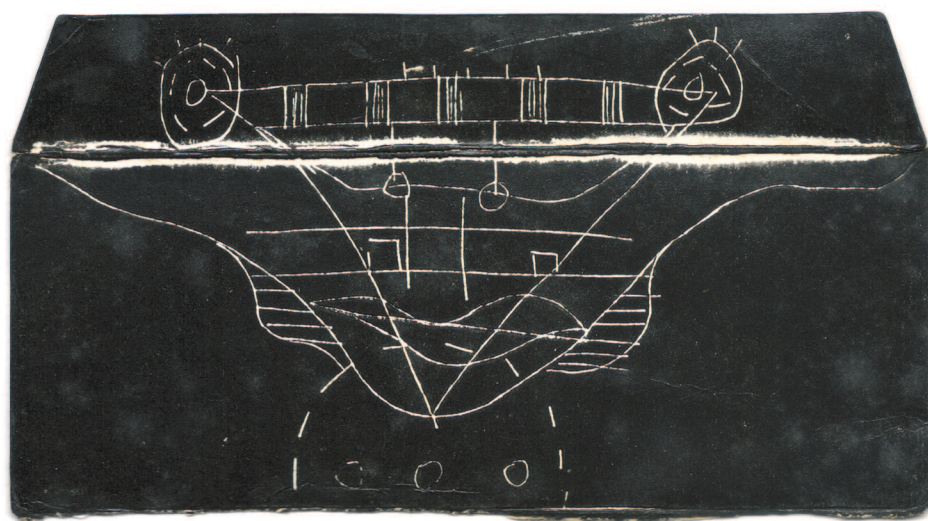


6 MARCH – 27 APRIL 2014

HONG KONG FORWARDS

SIN SIN FINE ART in collaboration with JCCAC



WONG TONG | Characters, 9 x 16 cm, Oil Ink on Cardboard, 2007

a group exhibition featuring works by Hong Kong artists:

FONNY LAU • JESSIE LEUNG • JOEY LEUNG
JULVIAN HO • WONG TONG
HONG KONG MODERN INK PAINTING SOCIETY

6 MARCH – 27 APRIL 2014

HONG KONG FORWARDS

SIN SIN FINE ART in collaboration with JCCAC

a group exhibition featuring works by Hong Kong artists:

FONNY LAU • JESSIE LEUNG • JOEY LEUNG
JULVIAN HO • WONG TONG
HONG KONG MODERN INK PAINTING SOCIETY

This PDF Booklet is published on the occasion
of HONG KONG FORWARDS Group Exhibition
jointly organised by Sin Sin Fine Art and JCCAC
at Sin Sin Fine Art, 6 Mar - 27 Apr 2014

Published by Sin Sin Fine Art ©2014

Sin Sin Fine Art
53 - 54 Sai Street,
Central, Hong Kong
+852 2858 5072
Info@sinsinfineart.com
www.sinsin.com.hk

JCCAC
Jockey Club Creative Arts Centre
賽馬會創意藝術中心



atelier ■ fine art ■ villa

HONG KONG FORWARDS

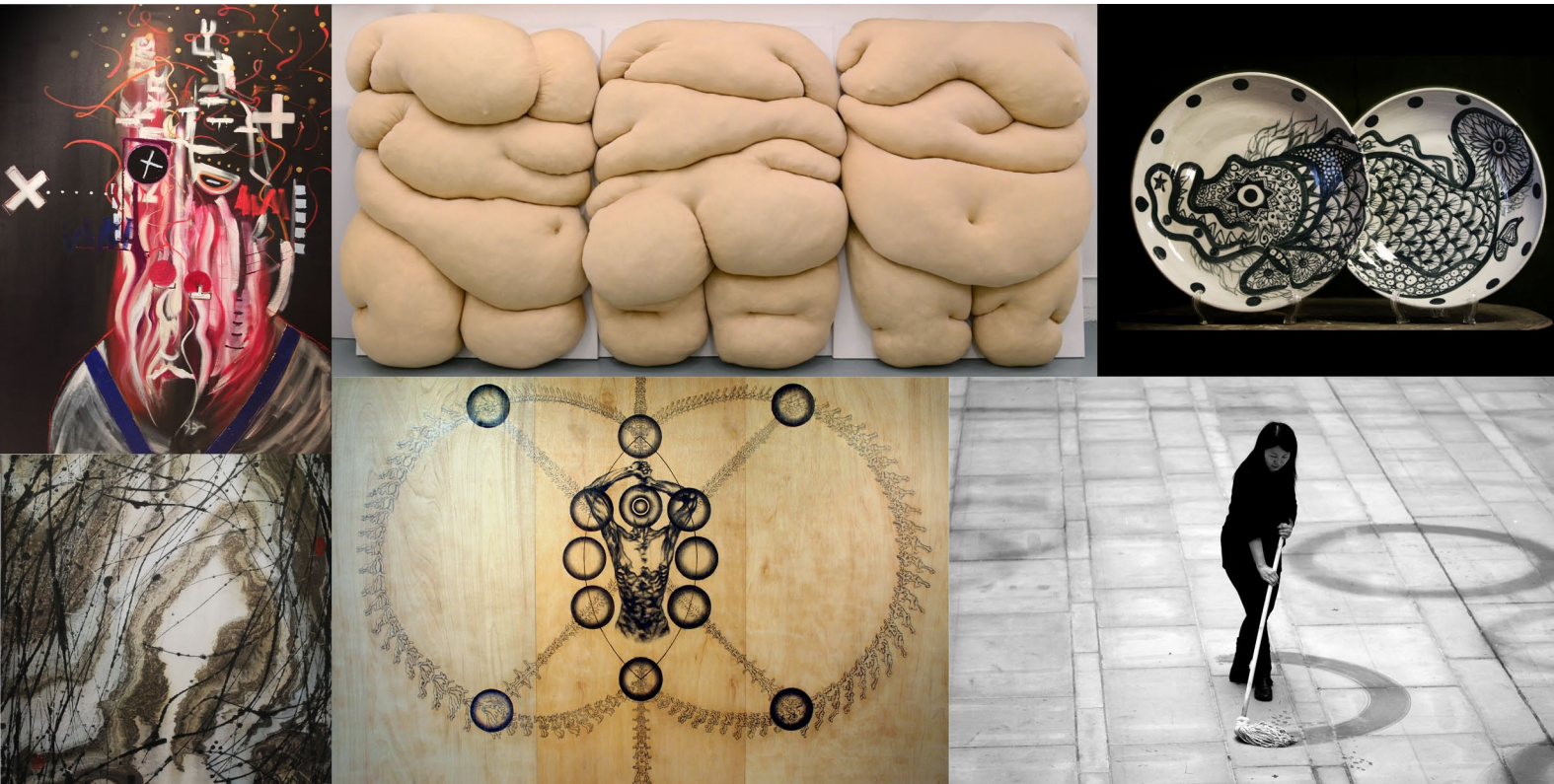
After a decade of bringing in exciting art discoveries from around the world - notably from Indonesia, to Hong Kong, Sin Sin is delighted to share a recent discoveries she found closer to home at JCCAC (Jockey Club Creative Arts Centre) in Shek Kip Mei, Hong Kong. In December 2013, Sin Sin attended the opening of FIVE, a group exhibition held at JCCAC in celebration of their 5th Anniversary, featuring works by their tenants. Some of the works she saw that evening captured her imagination and spoke directly to her current mission to delve deeper into Hong Kong art scene at grass root level through the space she has at Sin Sin Fine Art. It has always been her greatest joy to gather creative energy and to inspire more people.

Thus the first ever collaboration between Sin Sin Fine Art and JCCAC is born, manifested in this HONG KONG FORWARDS group exhibition. Sin Sin Fine Art and JCCAC are excited to show recent works by Fonny Lau, Jessie Leung, Joey Leung, Julvian Ho, Wong Tong and eight artists from Hong Kong Modern Ink Painting Society (Anita Lau Kam Chee, Chan Sing Kau, Jiwye To, Margaret Kwok Fan Yeung, Nina Pryde, Rick Chan Chak Fai, Stella Yau Mui Chun, and Wong Wai Keung).

The works shown in HONG KONG FORWARDS range from paintings to drawing on wooden panel, from ceramic to sculpture, from installation to art happening - showcasing a fresh eye on the scope of art practice by local artists in Hong Kong today.

Meet the artists during the ArtWalk on 12 March 2014, from 6 to 9 pm. To further encourage and facilitate dialogues between local artists, Meeting Point with Artists at Sin Sin will be held at Sin Sin Fine Art on 12 April 2014, from 3 to 8 pm. It is open to everyone who wishes to participate. Any artist and artlover in Hong Kong are encouraged to join the gathering and benefit from it.

Jockey Club Creative Arts Centre (aka JCCAC) is an award winning architectural conversion from the former Shek Kip Mei Factory Estate, which was a stronghold for cottage industries half a century ago. It opened in 2008 and operates as a self-financed, registered charity. As a multi-disciplinary arts village and art centre, JCCAC provides studio facilities for the arts community and a relaxed environment for the public to experience arts and culture. Visitors are welcome to stroll around freely during opening hours to discover for themselves the creative spirit of the place. JCCAC is looking forward to further collaborations to support the development of local art scenes.



clockwise from top left, artworks by: Wong Tong, Jessie Leung, Joey Leung, Fonny Lau, Julvian Ho, and Rick Chan Chak Fai (HKMIPS)

FONNY LAU

Zen Mopping

Watermarks on the floor

With a mop the cement floor of the desolate atrium at JCCAC is transformed into a canvas.

The choreographic mopping on the floor create a meditative moment for the integration of body, mind and spirit.

The result is a painting made of miraculously vanishing watermarks. While participants improvise their own marks and patterns, rhythm emerges.



Fonny Lau

ZEN MOPPING

Mixed Media | Performance
Dimension Variable, 2012

JESSIE LEUNG



Jessie Leung
THE WISHING TREE
 Chinese Painting, Colour and Ink on Silk,
 Mounted and Framed, 122 x 232 cm, 2011



Jessie Leung
SWINE FOOL

Chinese Painting, Colour and Ink on Silk Hanging Scroll
224 x 122 cm , 2014



Jessie Leung
DUCK FEVER

Chinese Painting, Colour and Ink on Silk Hanging Scroll
224 x 128 cm, 2014



Jessie Leung

PANNICULUS

Polyester Fibre (Filling), Polyester Linen (outer fibers) on Canvas
150 x 200 cm, 2011

JOEY LEUNG



Joey Leung
TOO MANY FISHES NO.1
Glazed Ceramic
Height 13 cm, 2014



Joey Leung
TOO MANY FISHES NO.2
Glazed Ceramic
Height 20 cm, 2014



Joey Leung
GOD OF DOOR F08

Glazed Ceramic
25 x 60 x 1.5 cm each - a set of two, 2013



Joey Leung
FISH DISH Z01
Glazed Ceramic
32 x 15 cm, 2013



Joey Leung
FISH DISH Z13
Glazed Ceramic
40 x 72 x 7 cm (composed by 2 dishes), 2014

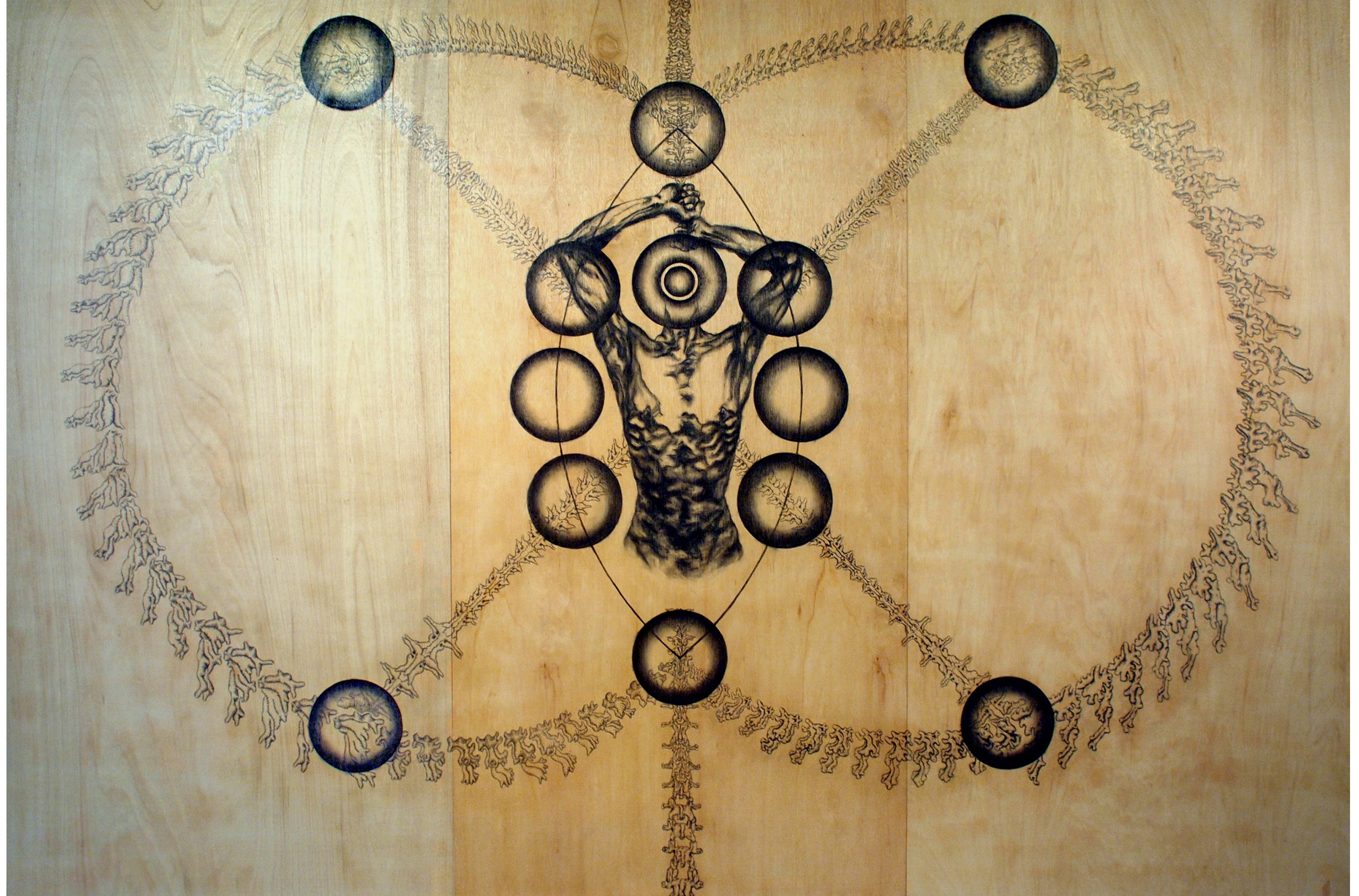


Joey Leung
FISH DISH D20
Glazed Ceramic
24.5 x 3 cm, 2013



Joey Leung
FISH DISH D21
Glazed Ceramic
32 x 6 cm, 2013

JULVIAN HO

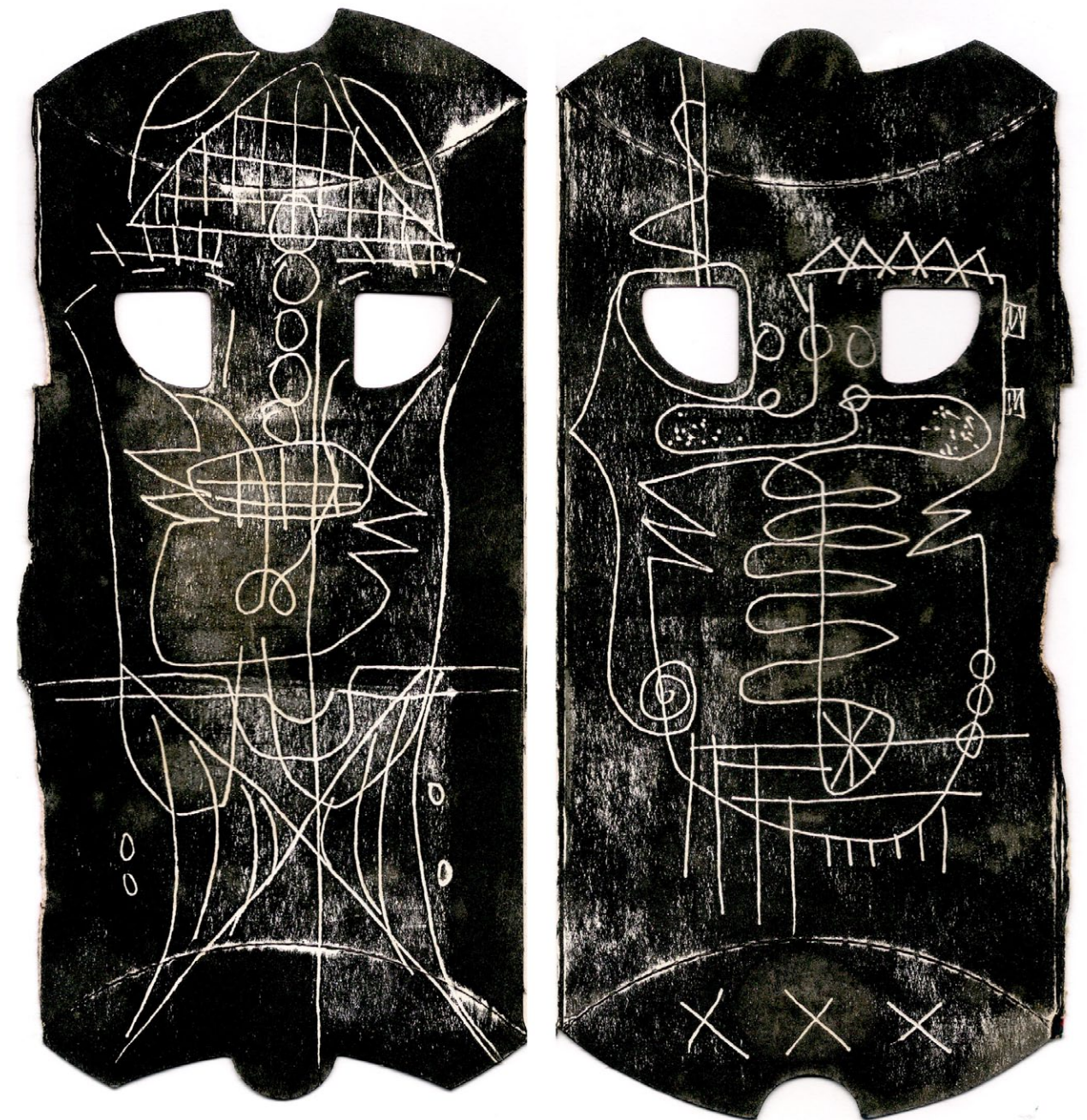


Julvian Ho
XIII - PROTOTYPE DRAWING NO.1
Pencil and Charcoal on Wood
244 x 366 cm, 2013

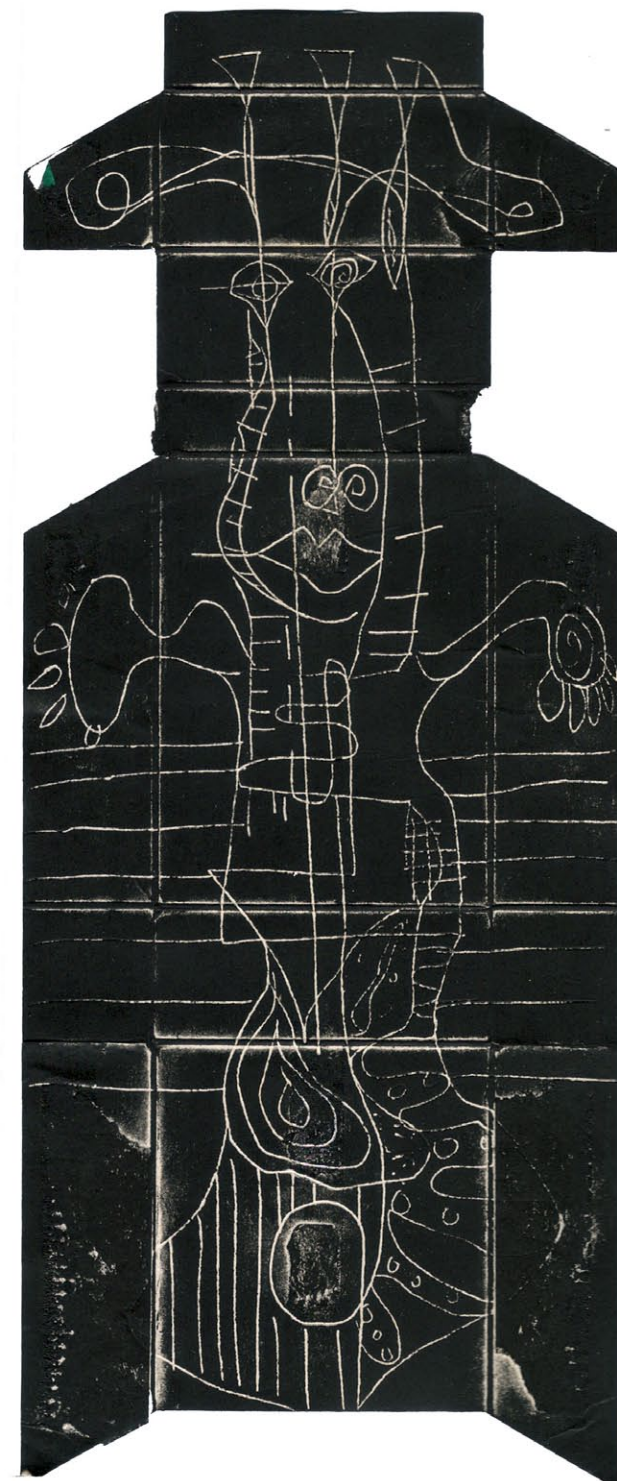
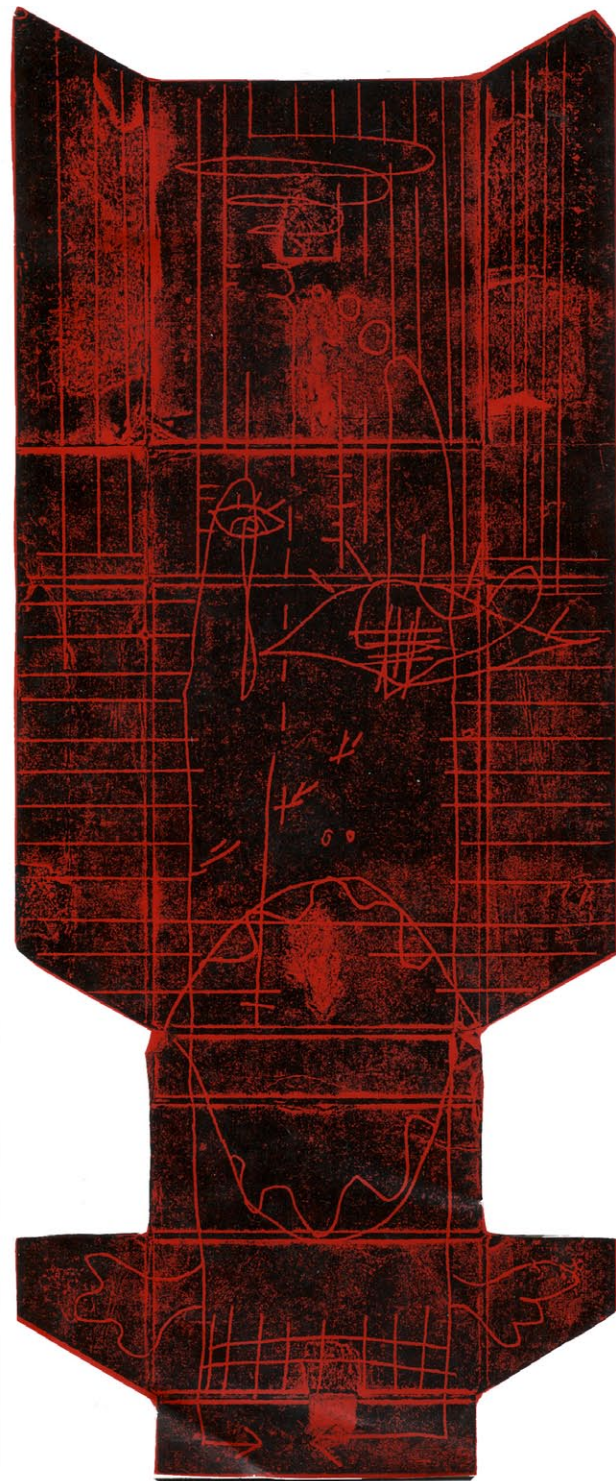
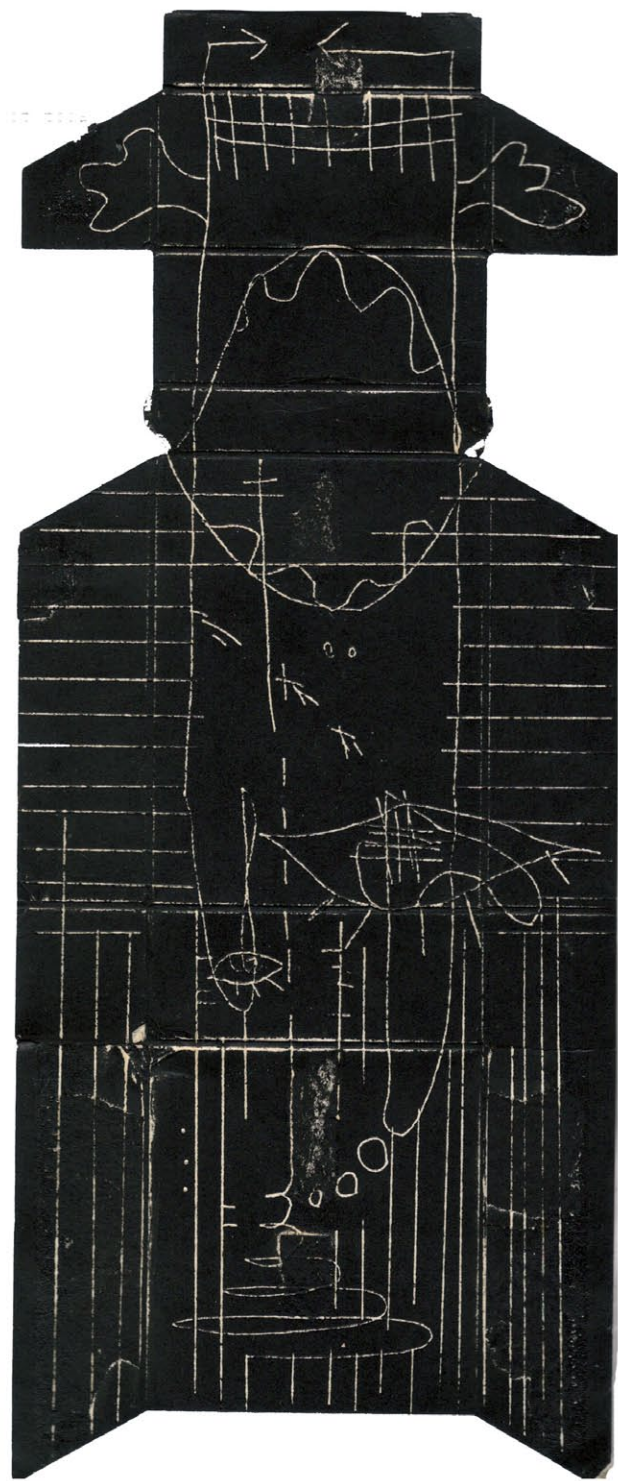
WONG TONG



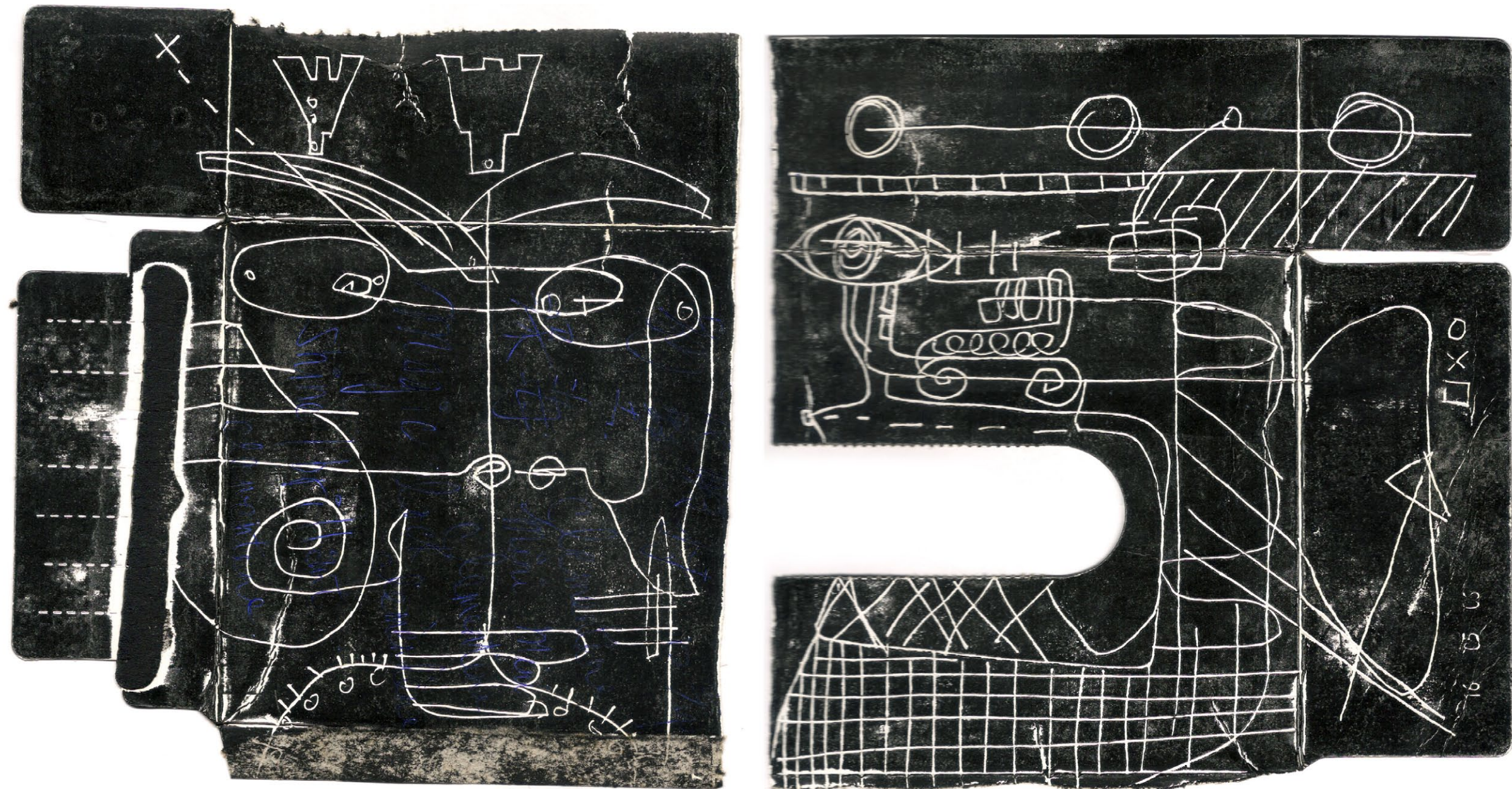
Wong Tong
ANCIENT PEOPLE
Oil Ink on Cardboard
24 x 23.5 cm, 2007



Wong Tong
GUARD
Printing Ink on Cardboard
18 x 16.5 cm, 2007



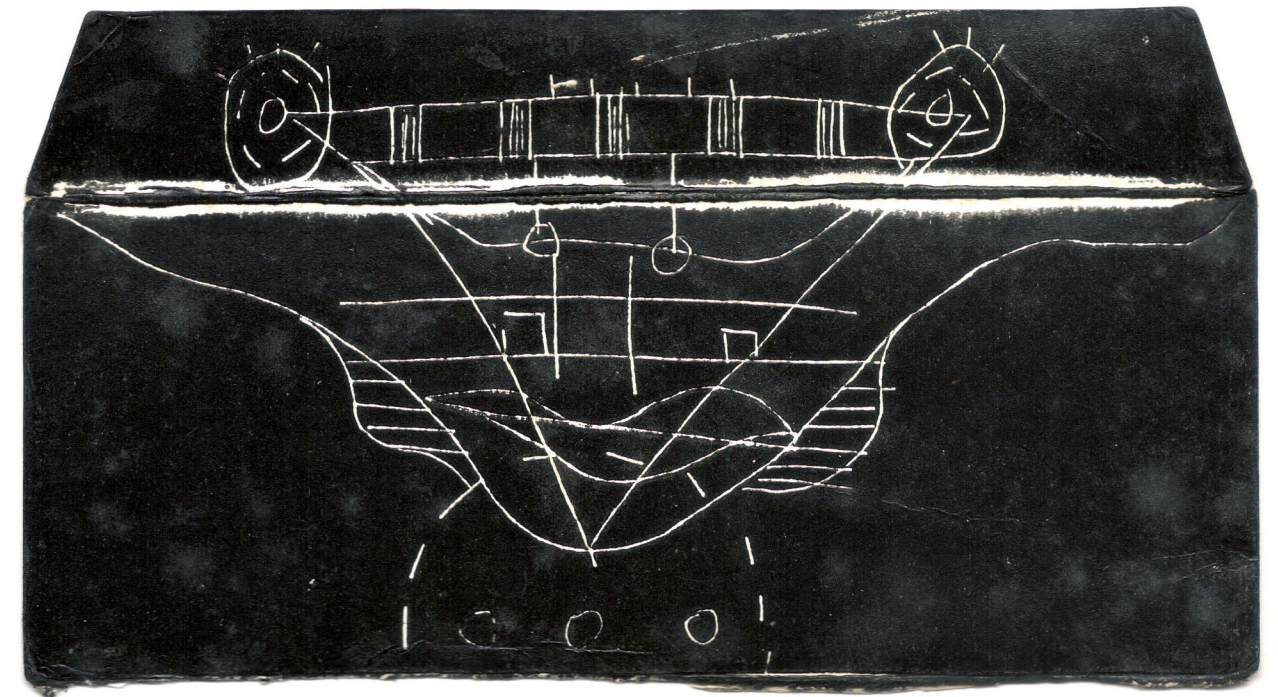
Wong Tong
DOOR GODS
Mixed Media
24 x 40 cm, 2007



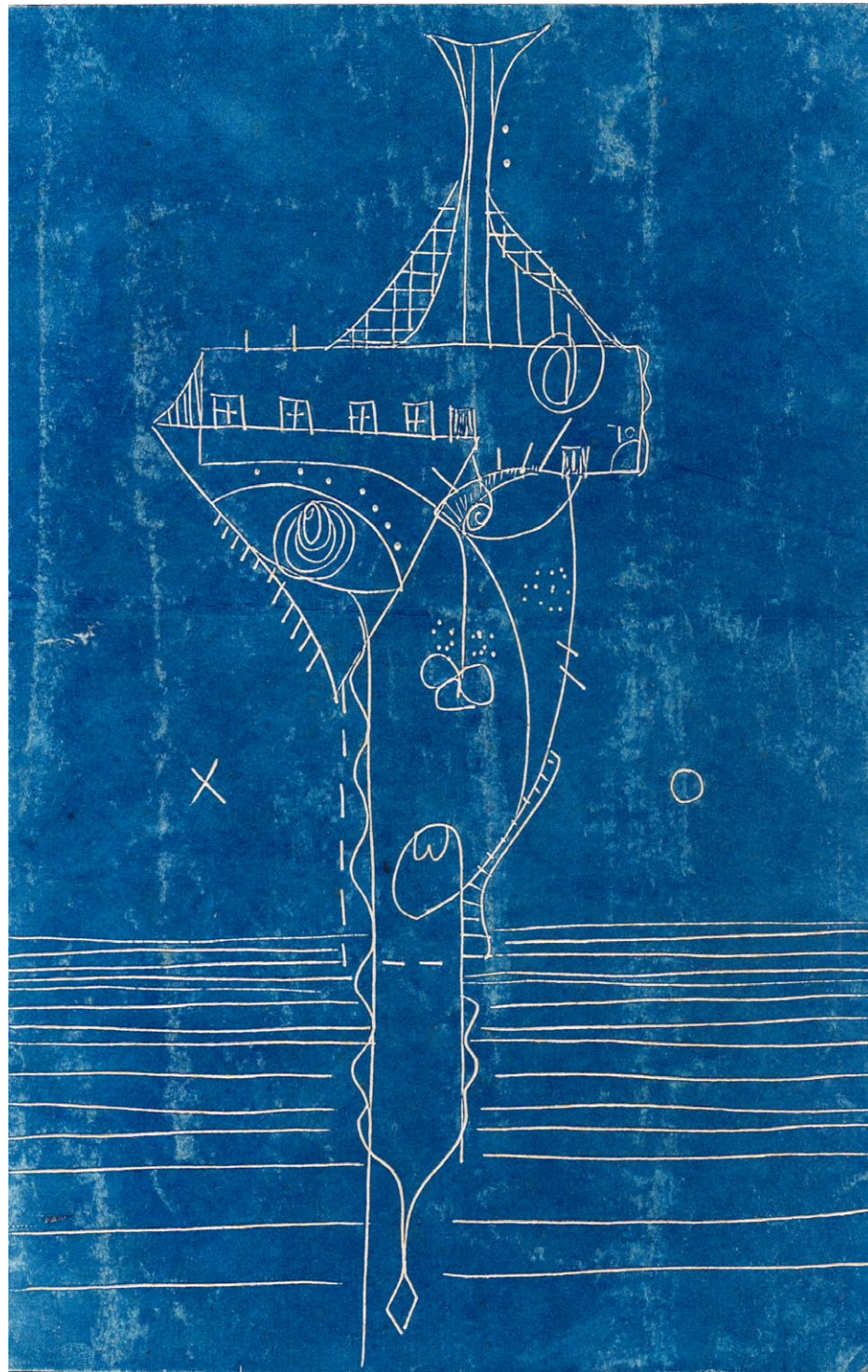
Wong Tong
ADMONISH
 Printing Ink on Cardboard
 17.5 x 32.5 cm, 2007



Wong Tong
DRINKING
Oil Pastel on Cardboard
10 x 8 cm, 2007



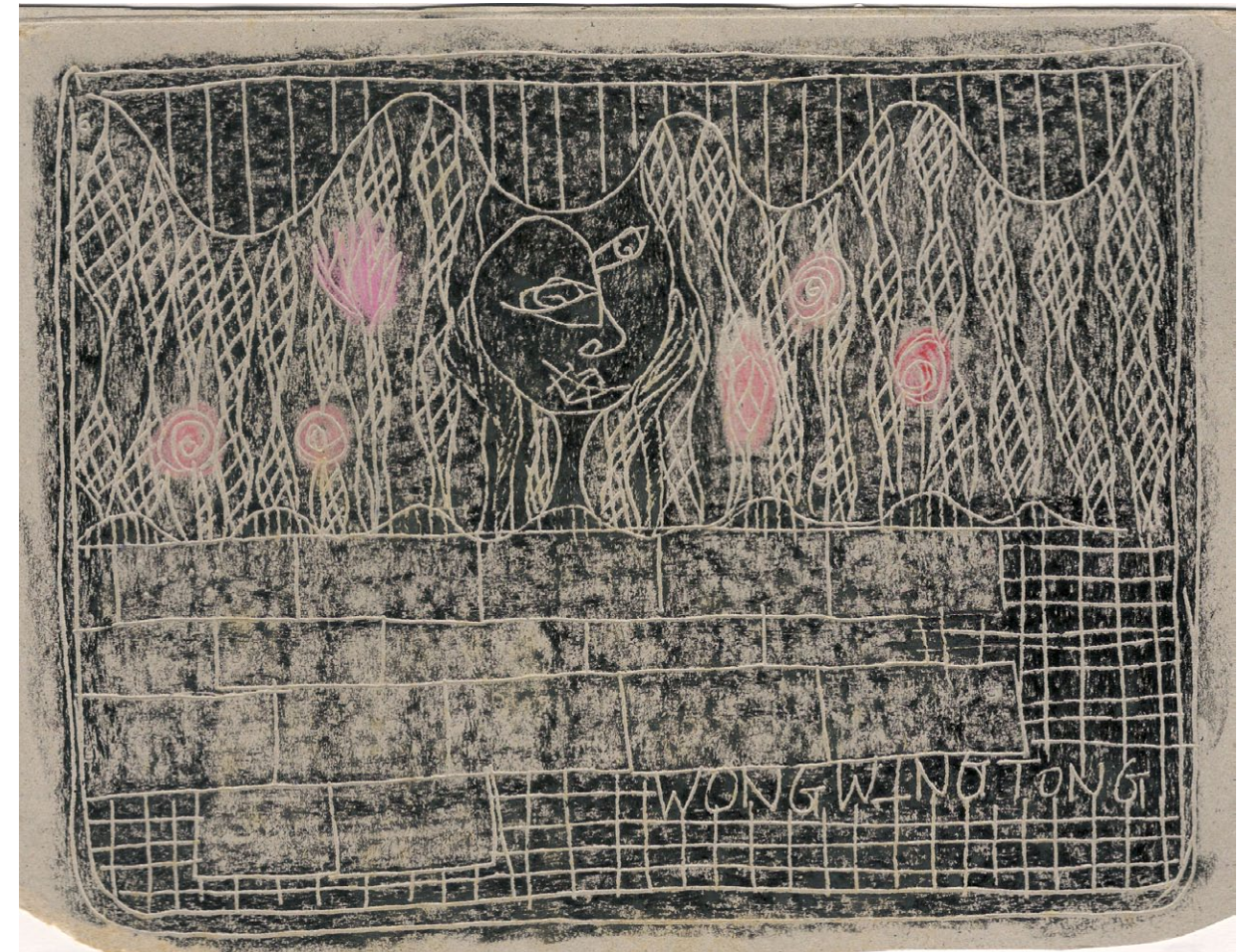
Wong Tong
CHARACTERS
Oil Ink on Cardboard
9 x 16 cm, 2007



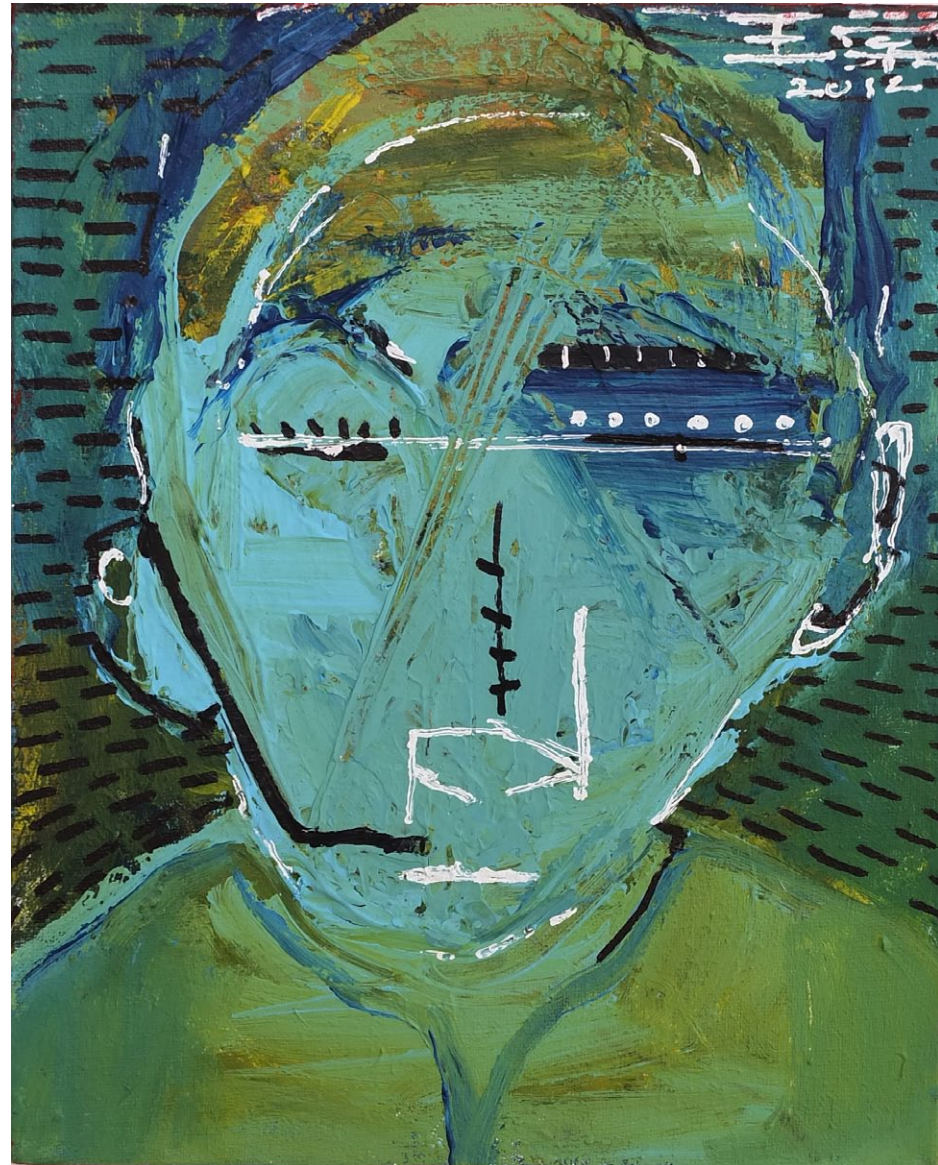
Wong Tong
SOJOURNER
 Printing Ink on Cardboard
 24.5 x 15.5 cm, 2007



Wong Tong
POLITICAL LOOBY
 Printing Ink on Cardboard
 23.5 x 17 cm, 2007



Wong Tong
IN THE GARDEN
Oil Pastel on Cardboard
14 x 18 cm, 2007



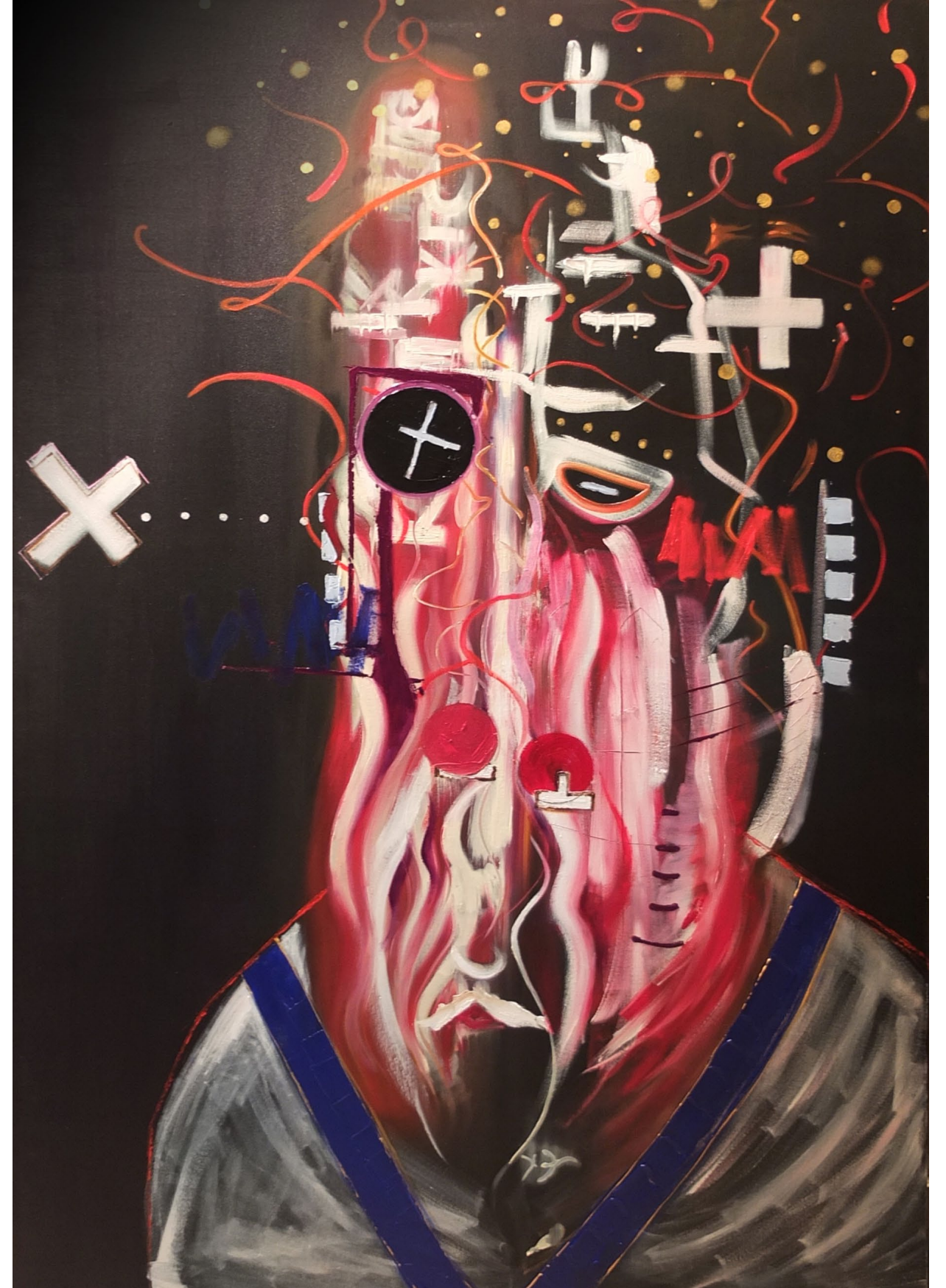
Wong Tong
APPRENTICE
Acrylics on Canvas
25 x 20 cm, 2012



Wong Tong
MISCHIEVOUS CHILD
Acrylics on Canvas
25 x 20 cm, 2012



Wong Tong
WHO
 Oil on Canvas
 160 x 93 cm, 2012



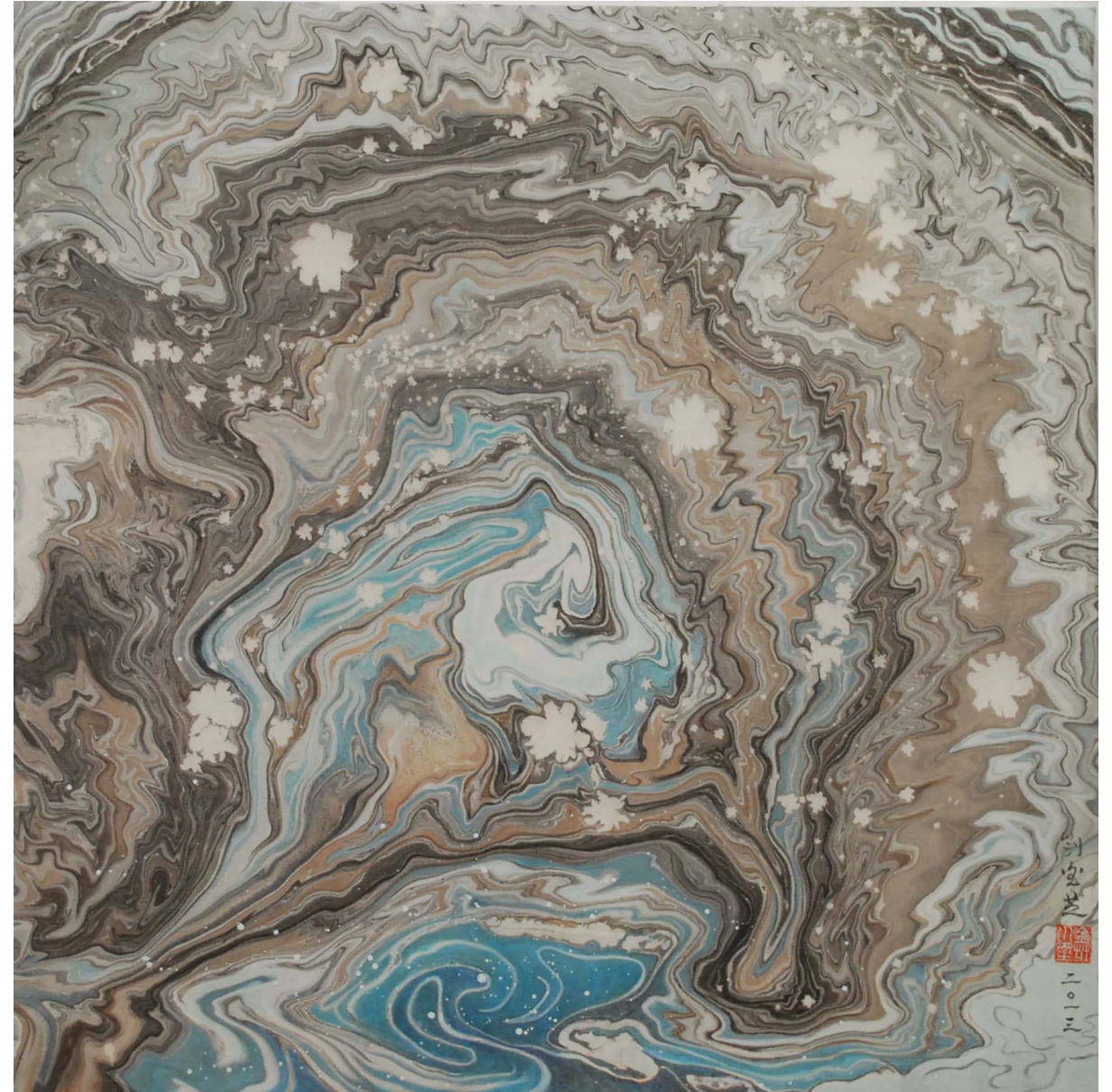
Wong Tong
WISH
 Oil on Canvas
 188 x 122 cm, 2012

ANITA LAU KAM CHEE



Anita Lau Kam Chee
MOUNTAIN DREAM

Ink on Paper
60 x 60 cm, 2013



Anita Lau Kam Chee
DREAM GARDEN

Ink on Paper
60 x 60 cm, 2013

CHAN SHING KAU



Chan Shing Kau
SUPERNATURAL (5)

Ink on Paper
60 x 60 cm, 2013



Chan Shing Kau
FOUNDATION ROOTS (134)

Ink on Paper
60 x 60 cm, 2014



Chan Shing Kau
FOUNDATION ROOTS (136)

Ink on Paper
60 x 60 cm, 2014

JIWYE TO

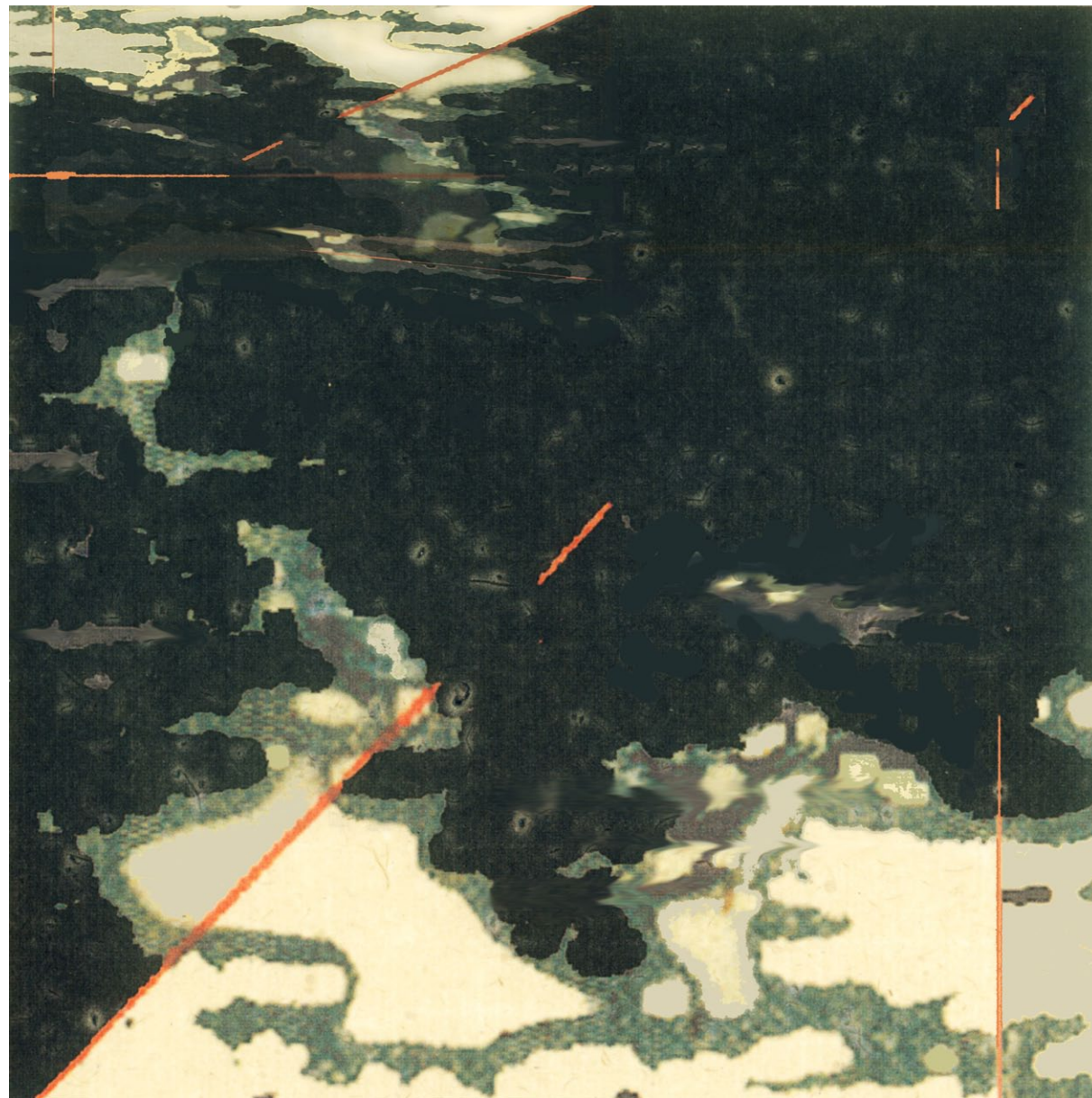


Jiwy To
VOID PURITY 8
Ink and Acrylic on Canvas
60 x 60 cm, 2013

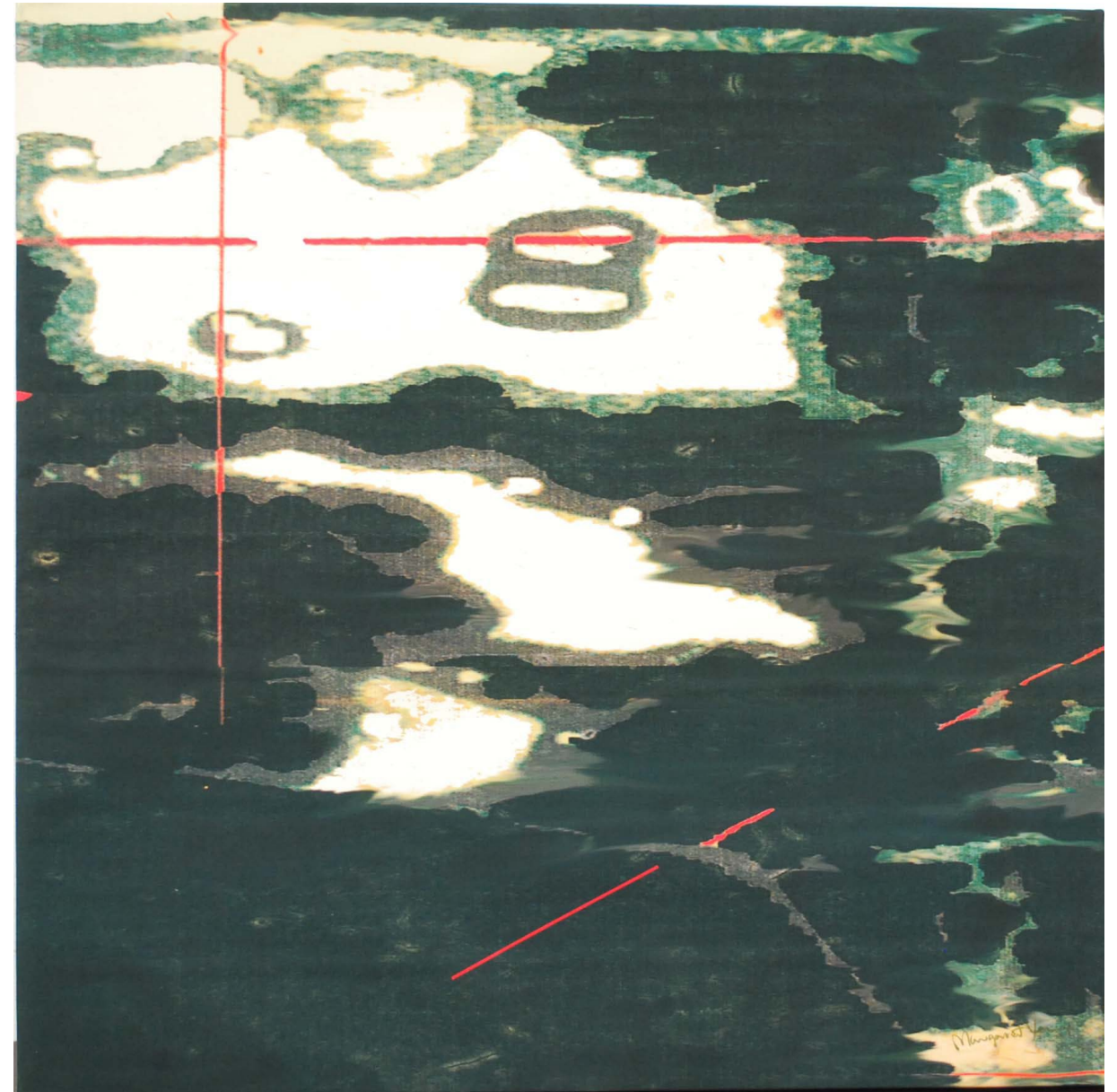


Jiwy To
VOID PURITY 6
Ink on Paper
60 x 60 cm, 2013

MARGARET YEUNG



Margaret Yeung
ZOOMSCAPE (V)
Digital Print
60 x 60 cm, 2013



Margaret Yeung
ZOOMSCAPE (VI)
Digital Print
60 x 60 cm, 2013

NINA PRYDE



Nina Pryde
STILLNESS

Ink, mixed media and collage on canvas
60 x 60 cm, 2013



Nina Pryde
OUT OF REACH

Ink on Paper
60 x 60 cm, 2013

RICK CHAN CHAK FAI



Rick Chan Chak Fai
ANCIENT VINES GAZE INTO VOYAGES 1
Ink on Paper
60 x 60 cm, 2013



Rick Chan Chak Fai
ANCIENT VINES GAZE INTO VOYAGES 2
Ink on Paper
60 x 60 cm, 2013

STELLA YAU MUI CHUN



Stella Yau Mui Chun
AWAITING TWILIGHT

Ink on Paper
60 x 60 cm, 2013

WONG WAI KEUNG



Wong Wai Keung

RAINBOW

Ink on Paper
60 x 60 cm, 2014



Wong Wai Keung

REEDS IN THE WIDE

Ink on Paper
60 x 60 cm, 2013

ABOUT the ARTISTS

Fonny Lau

Jessie Leung

Joey Leung

Julvian Ho

Wong Tong

from Hong Kong Modern Ink Painting Society:

Anita Lau Kam Chee

Chan Shing Kau

Jiwey To

Margaret Yeung

Nina Pryde

Rick Chan Chak Fai

Stella Yau Mui Chun

Wong Wai Keung

Fonny Lau 劉月寶



Graduated from the Graphic Communication program at the Hong Kong Polytechnic University, Fonny started her career as a graphic and exhibition designer in the Hong Kong Museum of Art, inspiring her to further explore her own passions for art and design. Driven by her diverse passions, she pursued her studies in ceramics at the Hong Kong Polytechnic University, and floral art at the Sogetsu School of International Ikebana, and recently graduated as a Master of Visual Arts at Hong Kong Baptist University. Fonny works with natural materials to create art, which exudes human warmth and delicacy. She creates her installations by bringing 'things' together, allowing the juxtaposed materials to speak for themselves. She 'rearranged' 'things' into artworks, drawing attention to the interdependent relationships between these materials and the space surrounding them.

Jessie Leung Ka Yi 梁家儀



Jessie Leung is a graduate of The Academy of Visual Arts, Hong Kong Baptist University. She was winner of numerous scholarships and awards, including the Padma & Hari Harilela Scholarship and the New Trend Award 2010. Her works are in various private collections.

Her works are abundant with stout and clumsy figures that reflect certain aspects of the artist's inner-being and self-image. Jessie Leung is obsessed with fat flesh. Her works attempt to explore the differences between human and animals, and also challenge the tradition of Chinese figure paintings. She adopted the traditional Chinese gonbi/ fine brush painting technique to exaggerate "fatness" through a series of portraits with fat ladies, toddlers and bugs.

During the creative process, she finds that the mind-surging ink splash for creating the body mass allows her emotional outlet, while the delicate fine brush painting of the details and insects calms her mind. Just like addiction, she cannot stop indulging herself in creating plump and grossly obese figures. She is addicted to fatness and hopes that the audience will have fun viewing her works.

JOEY LEUNG 梁祖彝



Joey Leung has been a professional photographer since 2001, but meanwhile has been devoting time to develop himself as a professional ceramicist. He graduated with Bachelor of Arts (Fine Arts) majoring in ceramic from RMIT University in 2011. Joey uses both ceramic and photography as media to express himself and his opinions towards the relationship between people, society and nature. Joey has won numerous awards from the Hong Kong Press Photographers Association, and his ceramic works are in various private collections.

Fish is a reoccurring motif in Joey's work. Artistically interpreted and hand-painted by Joey, his fish images merge both traditional and modern elements - making them uniquely Joey's. Elements are diverse and include folk tradition, images and happenings in current society, and even people's aspirations for life and after death. He tries to put both his emotion and thoughts into the work at the same time, rather than just offering something beautiful for the eyes to look at, thus encouraging the audience to feel and think.

JULVIAN HO 何晉暉



Born in 1988, Ho Julvian has a B.A.(Hons) in Visual Arts and is currently studying for Master of Visual Arts (Studio arts & Extended media) at the Academy of Visual Arts, Hong Kong Baptist University.

"I question how identities are built. One's identity is formed because of other identities; it's what we call relationships; relationships with society, friends, family and lover. One affects the other, one forms the other, one deforms the other, one is trying to be reformed because of the other. I want to record the whole process and represent it by drawings/paintings with a certain situation-like setting, like creating circumstances, the interdependent relationships between these materials and the space surrounding them."

WONG TONG 王棠



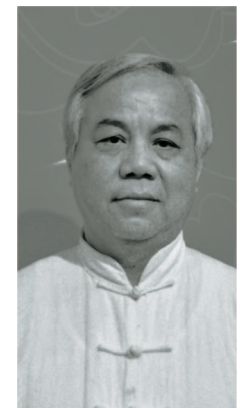
Wong Tong graduated from RMIT University jointly organized with the Hong Kong Arts Bachelor of Arts (Fine Art). His works are mostly painting, with preference to oil painting. Wong likes the slow process of oil painting which allows him to think not only about the artwork itself, but also his life, the path he's taking as well as his ideas and beliefs. Wong also has a talent of making a wide collection of art in different medium. He has participated in many exhibitions in Hong Kong, such as his installation work for the exhibition "City Lights Dian" at K11 Art Space in 2012, also his painting series of "Clouds and Flowing Water Line", and more recently his sculptural work "Memory x Memory x Memory x Time" - both at Sin Sin Fine Art in 2013.

ANITA LAU KAM CHEE 劉金芝



Born in Hong Kong, Anita Lau completed a diploma course in Modern Chinese Ink Painting at the Chinese University of Hong Kong in 1981. She is known for her ink diffusion painting techniques, which create great depth in her works. Besides her six solo exhibitions in Canada, Taiwan and Hong Kong, she has also participated in numerous joint exhibitions around the world. In 1992, she was short-listed for the Creativity Award in the Modern Ink Painting category by Taipei Fine Arts Museum. In 2004, her works were entered into the 10th National Fine Arts Exhibition of the Republic of China. She has published two painting albums, and many of her works have been collected by galleries and museums in China, Taiwan and Hong Kong.

CHAN SHING KAU 陳成球



Graduated from the Hong Kong Grantham College of Education majoring in art and design, Chan Shing Kau holds a Diploma in Modern Chinese Ink Painting from the Department of Extramural Studies of the Chinese University of Hong Kong, and a degree in Chinese language and literature from Hong Kong Baptist University. Since 1975, he has held various solo and joint exhibitions in Hong Kong, China, Taiwan and other overseas countries. His publications include 5 albums of paintings. His works are collected by museums, galleries and private collectors.

JIWYE TO 杜之外



Jiwy To mixes the idea of Zen, Phenomenology and Emptiness as his view on life and nature and the elements of his art. He showcases plenty of blank space in his painting to present the aesthetics of Emptiness. Jiwy creates an infinite imagination to the spectators, allowing them to enjoy the beauty of meditation and feel virtually free.

MARGARET KWOK FAN YEUNG 楊國芬



Margaret Yeung creates her artwork through digital coding from the Chinese keyboard. She generates the “crackled wall texture stroke” by computer software, demonstrating the destruction of Chinese culture in the Computer Age. By means of integrating Chinese painting with computer technology, she has committed herself to exploring for the “hybridity” and “harmoniousness” between them.

NINA PRYDE 派瑞芬

Nina Pryde was born in Hong Kong and she has practiced in various techniques and mediums for more than 30 years, including traditional and modern ink painting, calligraphy, prints, oil, acrylic, water colours, sculpting and ceramics. In 2007, Nina was awarded a Master's Degree in Fine Arts by the Royal Melbourne Institute of Technology.

One of the creative concepts behind Nina Pryde's paintings is to present new forms of artistic expression with the adaptation of traditional techniques. She has married history, architecture, and calligraphy with collage. Her pieces are technically distinctive. In her landscapes and three-dimensional works, one can see how traditional Chinese painting techniques and contemporary aesthetics beautifully blend together. Nina's Ink Painting has been recognized with numerous awards including RMIT Outstanding Students Award in 2007, selection for exhibition in the 2009 Hong Kong Contemporary Art Biennial Awards and 2013 Hong Kong Contemporary Art Awards Finalist. Her work has been exhibited both internationally and in Hong Kong and is in the collections of the Museum and Art Gallery of the University of Hong Kong, the Landmark Mandarin Oriental Hotel, Hong Kong as well as private organizations and art collectors.

Nina is the honorary chairperson of the Hong Kong Ink Painting Society.

RICK CHAN CHAK FAI 陳澤輝

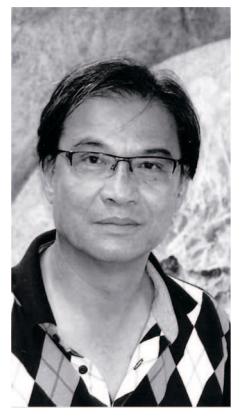
Using exploratory techniques to experiment the innovative aspect of Contemporary Ink Art from the perspective of its scales, materials, methods of fabrication, the traditional contents and personal preferences in aesthetic rhyme between East and West. Trying to envision what form or content of post-modern era painting could be offered in today's environment by mixing and blending of the two cultures. Visual abstracts can only be achieved with the understanding of nature imperfection, and with the intelligence of how scientific connotation derived from materials fabrication. With many different painting and fabrication know-how, one could express the inner nature of one's mental image from simplicity to compulsion, from directness to restraint, from instinct to wisdom, from lyric to reticence, and from spontaneous to repetitive.

STELLA YAU MUI CHUN 游梅珍



Stella Yau Mui Chun has learning about contemporary Chinese Ink painting from teacher Chan Kwan Lap since 2009. In 2011, with the encouragement of teacher Chan Kwan Lap, she participated in The 28th Sino-Japanese International Calligraphy and Painting Competition - in which she was awarded bronze award. She continued to develop a great appreciation of nature and the greatness of Creator under the guidance from teacher Chan Kwan Lap. In her process of creating art, she aims to strike a spiritual and state of mind interaction with spectator.

WONG WAI KEUNG 黃惠強



Born in Hong Kong, Wong Wai Keung graduated from the Design Department of Hong Kong Polytechnic, was conferred the Advanced Diploma Programme in Chinese Ink Painting with distinction by the Chinese University of Hong Kong (School of Continuing and Professional Studies).

Wong was once employed as Setting Designer by the Hong Kong Television & Broadcasting Limited and the Radio Television Hong Kong respectively. Afterwards, he has been running a product design workshop hitherto. Apart from his profession, he has a passionate interest in painting since his childhood, particularly in Modern Ink Painting. He has participated in several collective exhibitions in Hong Kong, Mainland China as well as Taiwan.



atelier ■ fine art ■ villa

Sin Sin Fine Art

53-54 Sai Street, Central, Hong Kong
t: +852 2858 5072 e: info@sinsinfineart.com
www.sinsin.com.hk